



(11) **EP 1 742 121 B1**

(12) **EUROPEAN PATENT SPECIFICATION**

(45) Date of publication and mention of the grant of the patent:
23.02.2011 Bulletin 2011/08

(51) Int Cl.:
G04G 21/04^(2010.01)

(21) Application number: **05397013.3**

(22) Date of filing: **22.06.2005**

(54) **Daylight saving time support for mobile devices**

Sommerzeit-Unterstützung für mobile Vorrichtungen

Support d'heure d'été pour dispositifs mobiles

(84) Designated Contracting States:
AT BE BG CH CY CZ DE DK EE ES FI FR GB GR HU IE IS IT LI LT LU MC NL PL PT RO SE SI SK TR

(30) Priority: **01.07.2004 US 884625**

(43) Date of publication of application:
10.01.2007 Bulletin 2007/02

(73) Proprietor: **Nokia Corporation**
02150 Espoo (FI)

(72) Inventor: **Punkka, Veikko**
33580, Tampere (FI)

(74) Representative: **Pursiainen, Timo Pekka et al**
Tampereen Patenttitoimisto Oy
Hermiankatu 1 B
33720 Tampere (FI)

(56) References cited:
EP-A- 1 227 644 WO-A-95/27927
US-A1- 2004 136 274 US-A1- 2004 204 002
US-B1- 6 587 398

EP 1 742 121 B1

Note: Within nine months of the publication of the mention of the grant of the European patent in the European Patent Bulletin, any person may give notice to the European Patent Office of opposition to that patent, in accordance with the Implementing Regulations. Notice of opposition shall not be deemed to have been filed until the opposition fee has been paid. (Art. 99(1) European Patent Convention).

Description

Field of the Invention

5 **[0001]** This invention relates generally to time management and particularly to such time management, wherein time zones and time rules are taken into account, especially, when an electronic device roams from one location to another.

Background of the Invention

10 **[0002]** Universal Time (abbreviated UT) or Greenwich Mean Time (abbreviated GMT) is generally used when describing time globally. These terms are often used to refer to time kept on the Greenwich meridian (longitude zero). According to Greenwich meridian agreement, the earth is divided into 24 time segments, time zones, each of which takes 1/24 of the day. In the most common civil usage, UT refers to a time scale called "Universal Time Coordinated" (abbreviated UTC).

15 **[0003]** In connection to civil time, the Daylight Saving Time, DST, (or Summer Time as it is called in many countries) is introduced. DST is a way of getting more from summer days by advancing the clocks typically one hour during the summer. According to this, the sunset and sunrise are later than during normal time (i.e. winter time, standard time of the country in question). DST helps to save energy (less artificial light is needed during the evening) and to make the country more effective in addition to the pleasing effect of lighter evenings. The utilization of DST comprises adjusting the clocks typically one hour ahead when DST begins (during spring), and adjusting them back to standard time every
20 autumn.

[0004] Approximately 70 countries utilize DST at least in a portion of the country. Japan is the only major industrialized country that has not adopted daylight saving. European nations have taken advantage of the time change for a long time and currently "summertime period" is standardized in the EU. EU's Daylight Saving Time runs from the last Sunday of March through the last Sunday in October.

25 **[0005]** For an example Moscow's standard time (UTC+3) is about a half-hour ahead of local mean time (UTC+2:30), which local mean time is the actual time in a given location based upon the Sun's position at the Midheaven (noon) of the place. This is about the same situation as in Detroit, where the standard time (UTC-5) is also about half-hour ahead of the local mean time (UTC-5:30). With their latitudes and with the relationship of their standard time to the local mean time the DST really helps to save daylight. In the Southern Hemisphere, where summer comes in December, DST is typically observed from October to March.

30 **[0006]** Equatorial and tropical countries (lower latitudes) do not observe DST since the daylight hours are similar during every season. This is why there is no advantage of moving clocks forward during the summer. China has had a single time zone since May 1, 1980 observing summer DST from 1986 through 1991, but currently they do not.

35 **[0007]** Most countries that observe daylight saving time are listed in the table below. Almost all of them save one hour in the summer and change their clocks some time between midnight and 3 am. Countries with "*" may have some specialities, which should be checked from national law.

Continent	Country	Beginning and ending days
40 <u>Africa</u>	Egypt	Start: Last Friday in April End: Last Thursday in September
	Namibia	Start: Frist sunday in September End: First Sunday in April
45 <u>Asia</u>	Most states of the former USSR.	Start: Last Sunday in March End: Last Sunday in October
	Iraq	Start: April 1 End: October 1
	Israel	(Estimate, Israel decides the day every year) Start: First Friday in April End: First Friday in September
	Lebanon, Kyrgyzstan	Start: Last Sunday in March End: Mast Sunday in October
	Mongolia	Stopped in 2002
55 Palestine	(Estimate) Start: First Friday on or after 15 April End: Frist Friday on or after 15 October	

EP 1 742 121 B1

(continued)

Continent	Country	Beginning and ending days
	Syria	Start: April 1 End: October 1
5	Iran	Start: the first day of Farvardin End: the first day of Mehr
	<u>Australia</u> South-Australia, Victoria, Australian Capital Territory, New South Wales, Lord Home Island (saves half an hour) Australia-Tasmania	Start: Last Sunday in October End: Last Sunday in March
10		Start: First Sunday in October End: Last Sunday in March
	Fiji	Stopped in 2000
15	New Zealand, Chatam*	Start: First Sunday in October End: Third Sunday in March
	Tonga	Start: First Sunday in November End: Last Sunday in January
20	<u>Europe</u> European Union*, UK*	Start: Last Sunday in March at 1 am UTC End: Last Sunday in October at 1 am UTC
	Russia	Start: Last Sunday in March at 2am local time End: Last Sunday in October at 2am local time
25	<u>North America</u> US*, Canada, Mexico St. Johns, Bahamas, Turks and Caicos Cuba	Start: First Sunday in April End: Last Sunday in October
		Start: April 1 End: Last Sunday in October
30	<u>South America</u> Greenland Brazil (rules vary from year to year) Equatorial Brazil does not observe DST. Chile*	Same as EU Start: First Sunday in November End: Third Sunday in February
35	Falklands	Start: Second Saturday of October at midnight End: Second Saturday of March at midnight
	Paraguay	Start: First Sunday on or after 8 September End: First Sunday on or after 6 April
40	<u>Antartica</u> Antartica	Start: First Sunday in Spetember End: First Sunday in April (varies)

[0008] It can be clearly seen from the table above that there are many oddities in countries. For example some parts of the US and Canada do not observe DST, such as the state of Arizona (US) and the province of Saskatchewan (Canada). The observance can also be erratic. For example Chile delayed its changeover date for the Pope's visit in 1987 and a presidential inauguration in 1990.

[0009] In Japan, DST was introduced after World War II by the US occupation but was dispensed with in 1952 following opposition from farmers. Despite efforts by the Ministry of International Trade and Industry to have daylight saving introduced to cut Japan's energy consumption, opposition from farmers and the Ministry of Education maintains the situation.

[0010] Time zones will become important to people e.g. when travelling. Travellers need to know the time of the destination, according to which they are required to change the time from the country of departure (home country). Often the new time is informed to the traveller, whereby he/she can change the time of his/her watch. Similarly, when contacting another person abroad, the time of the country in question should be known for not disturbing the person e.g. during the night.

[0011] The time of electronic systems can be handled by means of a network. Personal computers or other fixed network devices need more information about the daylight saving time than about the time zone. However the use of portable electronic devices is constantly increasing as well as use of them in different countries. According to the characteristics of the devices, the devices can move from one location to another, which locations can also situate in different time zones. Currently movable devices utilize a mobile network, and by means of NITZ messages (Network

Identity and Time Zone) received from the network, their time can be updated automatically. The NITZ informs the mobile device about a country code and the time zone, according to which the time in the mobile device can be updated.

[0012] The system time e.g. in Symbian based devices or Unix based devices runs in UTC. Due to this, the time is not changed by the change of the location or the start or the end of DST. The time presented to the user in the mobile terminal (referred as "home time") takes into account the time zone and the possible DST. The events and marks in the mobile terminal are shown to the user in that time. In order to show the current home time correctly, the terminal's local information includes the universal time offset of the time zone and the information about the state of DST. When the user deals with future dates and times, the system does not know the state of the DST, and hence cannot deduce the correct UTC time for the home time given by the user. Also, when the user receives an event described in home time, the event is also stored as home time. Because the system cannot deduce the correct UTC time for the event, the event won't be in UTC time. The user may define which operations are implemented when the device moves from one time zone to another. The user may set on the automatic update of time and time zone (acquired by NITZ) whereby the time zone of the device is updated. The user may also update the time zone manually or the user may adjust the time of the device without adjusting the time zone. However, in all those cases the system will show the future events in the old home time, not in the new home time, and any alarms tied to these events will be launched at the wrong time.

[0013] A solution for solving the problem relating to time management of mobile phones is proposed by Sharp. Their publication EP 1 227 644 suggests a method wherein the clock of the mobile terminal synchronizes itself with a base station in any location, whereby the base station transmits a control signal including a UTC signal, a system identification signal, a network identification signal, a current local time signal and a DST flag. A selection mechanism is arranged into the clock by means of which the user can select a home time zone and to select a displayed time on the clock display from the group of displayed times consisting of current local time and home time zone. In addition the clock comprises a displayed time calculating mechanism that determines the time displayed on the clock display as a function of the current local time and home time zone.

[0014] A time Schedule of events stored in memory is also rewritten when the mobile terminal synchronizes itself with a base station with a different local time.

[0015] The main defect in the related art is the one described earlier, a lack of a suitable method and a system according to which the updated time would reliably reach the stored events, and update them as well. This kind of solution would be highly profitable, especially for those users who travel frequently and are tied to calendar and time.

Summary of the Invention

[0016] The proposed solution according to this invention is aimed to overcome the defects of related art.

[0017] That is why in the method according to the invention for updating a time marking according to new location, a country related information is detected, a need for a time update is determined, and if needed, time rules corresponding to said country related information is retrieved from a memory of a device and the time is updated according to said time rules.

[0018] A device according to the invention comprises time measuring means, a memory storing time rules corresponding to said country related information indicative of daylight saving time for the country in question, an update converter for updating the time, the update converter being configured to detect a country related information and to determine a need for a time update, whereby the update converter is further configured to acquire time rules corresponding to said country, and further to update the time according to said time rules, if needed.

[0019] A computer program product according to the invention comprises computer readable instructions for detecting a country related information and instructions for determining a need for a time update, whereby the computer program product comprises instructions for acquiring time rules from a memory of a device, wherein said time rules corresponds to said country, and instructions for updating a time according to said time rules, if needed.

[0020] The solution according to the invention enables the user to move between time zones and the daylight saving time can be updated. The events that are entered by the user, received or stored in the user's device will be shown correctly in current local time. Similarly the alarms in connection to said events will operate at the correct time, i.e. the time of the location where the user is. The invention has considerable advantages compared to the related art and further advantages can be read from the description that follows.

Description of the Drawings

[0021] The invention is described in more detailed manner by means of following drawings, wherein

Figure 1 illustrates in a simplified manner the steps of one embodiment of the method according to the invention;

Figure 2 illustrates an example of one use case; and

Figure 3 illustrates an example of a device according to the invention.

Detailed Description of the Invention

5 **[0022]** The invention is described in a more detailed manner first by means of an implementation and after by means of few use examples. The device that utilizes the solution is in the description a Nokia 9500

[0023] Communicator. It will be, however, appreciated that the device can be some other device, which is movable and which has means for network connection and which comprises a clock or is somehow connected to one. Other examples are a mobile phone, a PDA device, a laptop etc.

10 **[0024]** The main idea according to the invention is to deduce the start and end dates of daylight saving time (DST) from the home city. The time of the home city is the time of the city the user usually is located in. The "current time", which may change according to moving of the user, is acquired from a network for the country in question. The current time is updateable when the user moves to a city with different DST calculation rules. The method is described further by means of figure 1, but before that, an example of the device according to the invention is described and illustrated in figure 3.

15 **[0025]** The device 300 comprises a time measuring means, e.g. clock 360 and display 340 for displaying visual information e.g. the time. Further the device 300 comprises a database 371 (arranged into the memory 370) that stores the cities and corresponding time zones and DST calculating rules. The memory 370 may store other data, programs etc. as well. The database is updated according to the relationships of cities to time zones and to start and end dates of DST. The database can be preconfigured with the country / city list, which can be updated by a user, but naturally the whole list can be inserted by the user according to his/her interests. The user can use e.g. a keypad 350 for entering data to the database. By means of the keypad 350 the user can enter data or control the device 300.

20 **[0026]** The device 300 comprises also a control unit 330 for controlling functions in the device 300. The control unit 330 may comprise one or more processors (CPU, DSP). The device 300 comprises an update converter 331 that is configured to implement the updating or resetting the time and may for instance be arranged into the control unit 330 as shown.

25 **[0027]** The time zone and the status of DST of the current city can be acquired from an update message that describes the time information of the city. This kind of update message can be a NITZ message that informs about the current network and the current time zone. The home city is updated, when an update message with a different time zone is received. The update message can be received via a network by means of a communication means 320 having a transmitter 321 and a receiver 322. There can be also other communicating means 380 having a transmitter 381 and a receiver 382 arranged into the device 300. The first communicating means 320 can be adapted for telecommunication and the other communicating means 380 can be a one kind of short-range communicating means, such as Bluetooth™ system, WLAN system (Wireless Local Area Network) or other system which is suited for local use and for communicating with another device.

30 **[0028]** The device 300 can also comprise other means, such as audio means, including an earphone and a microphone and optionally a codec for coding (and decoding, if needed) the audio information. Further the device 300 can operate also with location / positioning systems, e.g. a GPS.

35 **[0029]** Referring now to figure 1, there is shown an instance of when the update converter receives (100) an update message from the network, which update message is e.g. a NITZ message, with current time information. The update converter can also detect a country related information, e.g. by user input. When noticing a new time information message the converter is configured to decide (110), which operations it is supposed to do. The update converter can be programmed to neglect the update message and do nothing (120) if the current time zone remains or if the user does not want the updating. The update converter can also alert (130) the user and give the user a possibility to update the time and update the current city from a list of cities within the current country with the current time zone (both can be deduced from the message) or ignore the update. The update converter can also operate automatically (140) to update the time and, if the time zone changes or the DST status changes unexpectedly, also to update the home city (and hence time zone of the device). The update of home city can be requested, when the update message with the same time zone but an unexpected change in DST is received. The DST calculation rules of all the cities in a country can be updated when the country changes its DST calculation rules.

40 **[0030]** If the user has chosen the automatic update for the home city from the update message and other location data is available that uniquely determines (150) the city within the set of known cities with the correct country and time zone, the home city can be updated to that city. The location can be determined by the area code or known positioning systems, e.g. GPS. If there is no unique city, the update converter may create a temporary city (160) based on the known location information, choose the last visited city that matches the location information or choose a default city that matches the location information and update that to be the current home city. The user can change the home city manually if he/she so wishes. After having determined the current country or city the corresponding time rules are fetched from the database (170). The time rules may be time zone and daylight saving time calculation rules for the country / city in question.

55

[0031] When new location information with new time definitions is acquired, the converter is configured to determine times for the events being stored in the device (180). There is no need to specify the events, because an event can be any event which can be measured by time. As an example, the events can be e.g. a calendar event, a task, an alarm, but it is understood that the event can be another type of event relating to time.

[0032] The operation is also illustrated in figure 2, wherein a mobile terminal (MT) at current time (CT1) moves over (X1) at least one time zone border (TZB), wherein the new current time (CT2) is, according to the situation in figure 2, three hours ahead the previous (CT1). In the new time zone the mobile terminal (MT) receives (X2) an update message (UM) from network (N). The mobile terminal (MT) determines the new time for the events being stored in the terminal.

[0033] The previous description is clarified with following examples. Four different use cases are assumed, wherein 1) user A is located in London, but moves to New York ; 2) user A locates in London, but moves to New York and returns to London again ; 3) user A locates in London, user B locates in New York, user C locates in Tokyo and the users are having a telephone conference together.

1) From London to New York

[0034] User A lives in London and has home time, which is a local time of London, set to his movable device. He has set calendar events in the local time, although he is aware of going to New York for a meeting. The meeting is marked to the calendar to start on Monday at 12 p.m. However the marking does not take into account where the meeting is held. When user A flies to New York, switches on the movable device, he will get the update message informing about the new time, a local time of New York. User A has chosen the option of automatic update, because he finds that option more usable because of lot of travelling. As a result of the update the marking is maintained on its place (on Monday 12 p.m.) regardless of the time difference and not kept in English local time that would be 5 p.m. On Monday, at 11 a.m. New York time, user A is reminded by an alarm, which was programmed to alarm an hour before the meeting. Although the user had set the meetings in his home country, the change in time zones maintains the marked time according to the visited time zone, therefore the alarm is launched at the "wrong time" compared to London (4 p.m. London time), where the mark was made. The alarming time corresponds to the correct time in the city the user is located in and where the meeting is to be held.

[0035] It is possible to program the device to automatically detect the place of stay according to the place code marked into calendar. For example user A could have marked "12 p.m. Meeting NYC", whereby the update converter would automatically keep the time in New York time. Similarly the marking can be displayed in the calendar at hour 12, but with the place code.

[0036] User A can be given a possibility for e.g. a scheduled SMS-messaging or other automatic function (e.g. email synchronization). For example, if user A wants to send New Year's Eve wishes from New York City to London, he can determine the SMS message, with an option "Send earliest 00:00 LON", whereby the time is determined by London time, and due to it, is sent at 7 p.m. in New York time. If user A would have sent the SMS according to his current time (time in New York) the message would have reached the recipient 5 hours too late. The automatic conversion is made by the country code, e.g. LON, by the update converter.

2) From London to New York and again to London

[0037] While user A stays in New York his secretary, who resides in London, can send a SMS and add an appointment to user A's calendar that will be held in London on Friday at 3 p.m. The marking is made according to secretary's current time and the appointment is shown to the secretary in 3 p.m. It should be noticed here, that when user A synchronized calendar data with corporate server the appointment is in the same time regardless of his location. When user A returns to London, the update converter transforms the time in such a manner that it maintains the time at 3 p.m. in London time.

[0038] Basically the operations for returning time are carried out similarly to the time updating. The update message is received and the updating operations are implemented by the converter.

3) Phone meeting between London, New York, Tokyo

[0039] In some cases, e.g. in a phone conference between London, New York and Tokyo, the time should be maintained as it is. User C from Tokyo sets up the meeting at 10 a.m. and informs the others to be available at 10 a.m. Tokyo's local time. User A in London is reserved then at 2 a.m. and user B in New York is reserved at 9 p.m. (previous day). Usually the update converter would transform the time to the corresponding (same) time of the country in question, but in this case the actual time of Tokyo is essential. User A and user B have to be aware of the time difference and have their calendar updated according the local time. The update converter is configured to determine which operations the marking would need. There are various ways to instruct the update converter to determine the operations. User C can oblige the marking to remain in Japanese time or users A, B may accept the marking and maintain the Japanese time

by leaving it to the corresponding country time.

[0040] According to the invention users in different countries can still organize their workdays easily according to the invention.

5 **[0041]** The above-mentioned examples should be considered as illustrations of the invention, and that is why, other applicable use cases will be appreciated by the man skilled in the art. For example future coming events, such as the starting time of a conference, the lighting time for Olympic fire in a specific country, etc. are such that they can be marked and are correctly shown in the current country when the device is located there. Beside future events, also events and tasks that are occurring in the same day are handled by the current solution. The events like e.g. an alarm clock in every working day, daily reminder (e.g. hour of prayer, time for taking medicine) / weekly (e.g. a language course) / monthly (reading of an electricity meter) / annual (e.g. car inspection), task within following e.g. 12 hours can be handled. Similarly, other possible events are timed profiles, timed switch on - off, back up copying in certain time of the day, other scheduled activities, etc. It will also be appreciated that the device can be also another device that operates under time constraints or needs time information and that has roaming capabilities.

10 **[0042]** It will also be clear that variations and modifications of the examples as well as the implementation described are possible without departing from the scope of protection of the invention as set forth in the claims.

Claims

- 20 1. A method for updating a time marking in a portable device (300), comprising
- communicating with a network in order to obtain country related information,
 - determining, based on the country related information, whether there is a need for a time update in the portable device (300),
 - 25 - automatically retrieving from a memory (370) of said portable device (300), in response to a determined need for a time update, time rules corresponding to said country related information indicative of daylight saving time for the country in question: and
 - updating a time marking for at least one event stored in said portable device (300) according to said time rules.
- 30 2. The method according to claim 1, wherein the country related information comprises at least information about one of the following, a code for the country, a time zone for the country.
3. The method according to claim 1, wherein the time is updated for at least one event in a device, because of a movement of the device from one location to another.
- 35 4. The method according to claim 1, wherein the time is updated for at least one event in a device according to location (s) of at least one another device.
- 40 5. The method according to claim 1, wherein an event is at least one of the following: a calendar event, a task, an alarm, a clock (360).
6. The method according to claim 1, wherein the time is updated in a movable device.
- 45 7. A device comprising
- communication means configured to communicate with a network in order to obtain country related information,
 - a memory (370) configured to store, time rules corresponding to said country related information indicative of daylight saving time for the country in question,
 - an update converter (331) being configured to determine, based on the country related information, whether
 - 50 there is a need for a time update in the device (300), and
 - to automatically retrieve from the memory (370) of said device (300), in response to a determined need for a time update, said time rules, and further
 - to update a time marking for at least one event stored in said device (300) according to said time rules.
- 55 8. The device according to claim 7, wherein the update converter (331) is operatively communicating with a network, via which the country related information is acquired.
9. The device according to claim 7, wherein the device (300) comprises input means for allowing the user to enter the

country related information.

10. The device according to claim 7, wherein the country related information comprises at least information about one of the following, a code for the country, a time zone for the country.

11. The device according to claim 7, wherein the update converter (331) is configured to update the time of at least one event arranged into said device (300) according to device's movement from one location to another.

12. The device according to claim 11, wherein the event is at least one of the following: a calendar mark, a task, an alarm, a clock (360).

13. A computer program adapted to perform the steps of claim 1 when run on the device of claim 7.

Patentansprüche

1. Verfahren zum Aktualisieren einer Zeitmarkierung in einem tragbaren Gerät (300), umfassend:

- Kommunizieren mit einem Netz, um länderbezogene Information zu erhalten,
- Feststellen, auf Basis der länderbezogenen Information, ob eine Notwendigkeit einer Zeitaktualisierung in dem tragbaren Gerät (300) besteht,
- automatisches Beziehen aus einem Speicher (370) des tragbaren Geräts (300), in Antwort auf eine festgestellte Notwendigkeit einer Zeitaktualisierung, von Zeitregeln, welche der länderbezogenen Information entsprechen, die Daylight Saving Time für das betroffene Land angibt:

und

- Aktualisieren einer Zeitmarkierung für wenigstens ein Ereignis, welches in dem tragbaren Gerät (300) gespeichert ist, entsprechend den Zeitregeln.

2. Verfahren nach Anspruch 1, wobei die länderbezogene Information wenigstens Information über eines der Folgenden umfasst: einen Code für das Land, eine Zeitzone für das Land.

3. Verfahren nach Anspruch 1, wobei die Zeit für wenigstens ein Ereignis in einem Gerät auf Grund einer Bewegung des Geräts von einem Ort zu einem anderen aktualisiert wird.

4. Verfahren nach Anspruch 1, wobei die Zeit für wenigstens ein Ereignis in einem Gerät entsprechend (einem) Ort (en) wenigstens eines weiteren Geräts aktualisiert wird.

5. Verfahren nach Anspruch 1, wobei ein Ereignis wenigstens eines ist von den Folgenden: ein Ereignis im Kalender, eine Aufgabe, ein Alarm, eine Uhr (360).

6. Verfahren nach Anspruch 1, wobei die Zeit in einem beweglichen Gerät aktualisiert wird.

7. Gerät, umfassend:

- Kommunikationsmittel, welche gestaltet sind zum Kommunizieren mit einem Netz, um länderbezogene Information zu erhalten,
- einen Speicher (370), welcher gestaltet ist zum Speichern von Zeitregeln, welche der länderbezogenen Information entsprechen, die Daylight Saving Time für das betroffene Land angibt,
- einen Aktualisierungs-Umsteller (331), welcher gestaltet ist zum Feststellen, auf Basis der länderbezogenen Information, ob eine Notwendigkeit einer Zeitaktualisierung in dem tragbaren Gerät (300) besteht, und
- zum automatischen Beziehen aus dem Speicher (370) des Geräts (300), in Antwort auf eine festgestellte Notwendigkeit einer Zeitaktualisierung, der Zeitregeln, und ferner
- zum Aktualisieren einer Zeitmarkierung für wenigstens ein Ereignis, welches in dem Gerät (300) gespeichert ist, entsprechend den Zeitregeln.

8. Gerät nach Anspruch 7, wobei der Aktualisierungs-Umsteller (331) geeignet mit einem Netz kommuniziert, über

EP 1 742 121 B1

welches die länderbezogene Information erhalten wird.

9. Gerät nach Anspruch 7, wobei das Gerät (300) Eingabemittel umfasst, zum Ermöglichen, dass der Nutzer die länderbezogene Information eingibt.

10. Gerät nach Anspruch 7, wobei die länderbezogene Information wenigstens Information über eines der Folgenden umfasst: einen Code für das Land, eine Zeitzone für das Land.

11. Gerät nach Anspruch 7, wobei der Aktualisierungs-Umsteller (331) gestaltet ist zum Aktualisieren der Zeit wenigstens eines Ereignisses, welches in dem Gerät (300) organisiert ist, entsprechend der Bewegung des Geräts von einem Ort zu einem anderen.

12. Gerät nach Anspruch 11, wobei das Ereignis wenigstens eines der Folgenden ist: eine Kalender-Markierung, eine Aufgabe, ein Alarm, eine Uhr (360).

13. Computerprogramm, angepasst zum Durchführen der Schritte nach Anspruch 1, wenn es auf dem Gerät nach Anspruch 7 ausgeführt wird.

Revendications

1. Procédé pour actualiser un marquage horaire dans un dispositif portable (300), comprenant :

- communiquer avec un réseau afin d'obtenir des informations connexes au pays,
- déterminer, sur la base des informations connexes au pays, si une actualisation horaire est nécessaire dans le dispositif portable (300),
- récupérer automatiquement à partir d'une mémoire (370) dudit dispositif portable (300), en réponse à une nécessité déterminée concernant une actualisation horaire, des règles horaires correspondant auxdites informations connexes au pays indicatives de l'heure d'été pour le pays en question ; et
- actualiser un marquage horaire pour au moins un événement stocké dans ledit dispositif portable (300) selon lesdites règles horaires.

2. Procédé selon la revendication 1, dans lequel les informations connexes au pays comprennent au moins des informations concernant un des éléments suivants : un code pour le pays, un fuseau horaire pour le pays.

3. Procédé selon la revendication 1, dans lequel l'heure est actualisée pour au moins un événement dans un dispositif, à cause d'un mouvement du dispositif d'une localisation à une autre.

4. Procédé selon la revendication 1, dans lequel l'heure est actualisée pour au moins un événement dans un dispositif selon une ou des localisations d'au moins un autre dispositif.

5. Procédé selon la revendication 1, dans lequel un événement est au moins un des éléments suivants : un événement calendaire, une tâche, une alarme, une horloge (360).

6. Procédé selon la revendication 1, dans lequel l'heure est actualisée dans un dispositif mobile.

7. Dispositif, comprenant :

- des moyens de communication configurés pour communiquer avec un réseau afin d'obtenir des informations connexes au pays,
- une mémoire (370) configurée pour stocker des règles horaires correspondant auxdites informations connexes au pays indicatives de l'heure d'été pour le pays en question,
- un convertisseur d'actualisation (331) configuré pour déterminer, sur la base des informations connexes au pays, si une actualisation horaire est nécessaire dans le dispositif (300), et
- pour récupérer automatiquement à partir de la mémoire (370) dudit dispositif (300), en réponse à une nécessité déterminée concernant une actualisation horaire, lesdites règles horaires, et en outre
- pour actualiser un marquage horaire pour au moins un événement stocké dans ledit dispositif (300) selon lesdites règles horaires.

EP 1 742 121 B1

8. Dispositif selon la revendication 7, dans lequel le convertisseur d'actualisation (331) communique de façon opérationnelle avec un réseau, par l'intermédiaire duquel les informations connexes au pays sont acquises.
- 5 9. Dispositif selon la revendication 7, dans lequel le dispositif (300) comprend des moyens d'entrée pour permettre à l'utilisateur d'entrer les informations connexes au pays.
10. Dispositif selon la revendication 7, dans lequel les informations connexes au pays comprennent au moins des informations concernant un des éléments suivants : un code pour le pays, un fuseau horaire pour le pays.
- 10 11. Dispositif selon la revendication 7, dans lequel le convertisseur d'actualisation (331) est configuré pour actualiser l'heure d'au moins un événement agencé dans ledit dispositif (300) selon le mouvement du dispositif d'une localisation à une autre.
- 15 12. Dispositif selon la revendication 11, dans lequel l'événement est au moins un des éléments suivants : une marque calendaire, une tâche, une alarme, une horloge (360).
13. Programme informatique adapté pour réaliser les étapes de la revendication 1 lorsqu'il est exécuté sur le dispositif de la revendication 7.

20

25

30

35

40

45

50

55

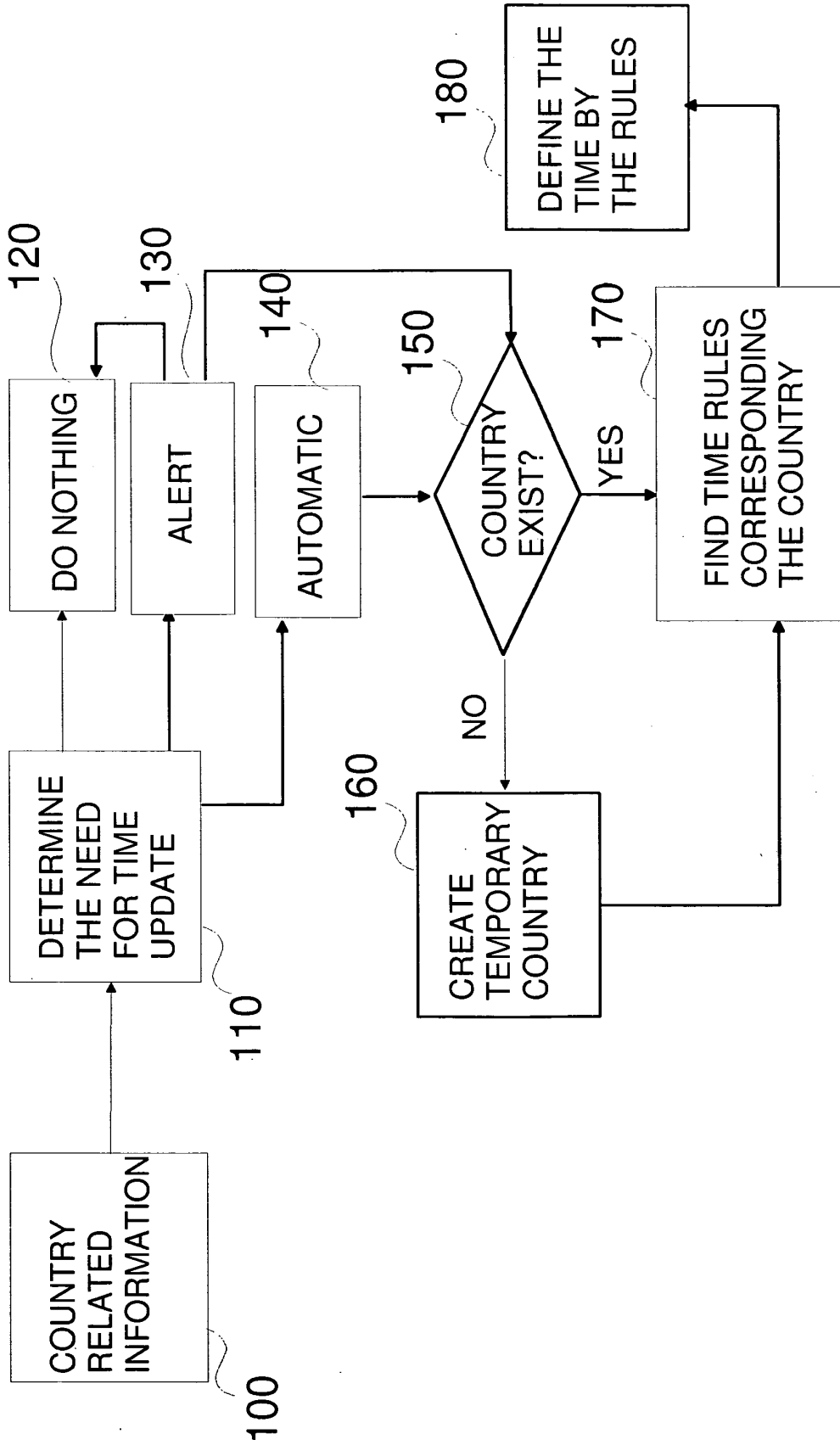


Fig. 1

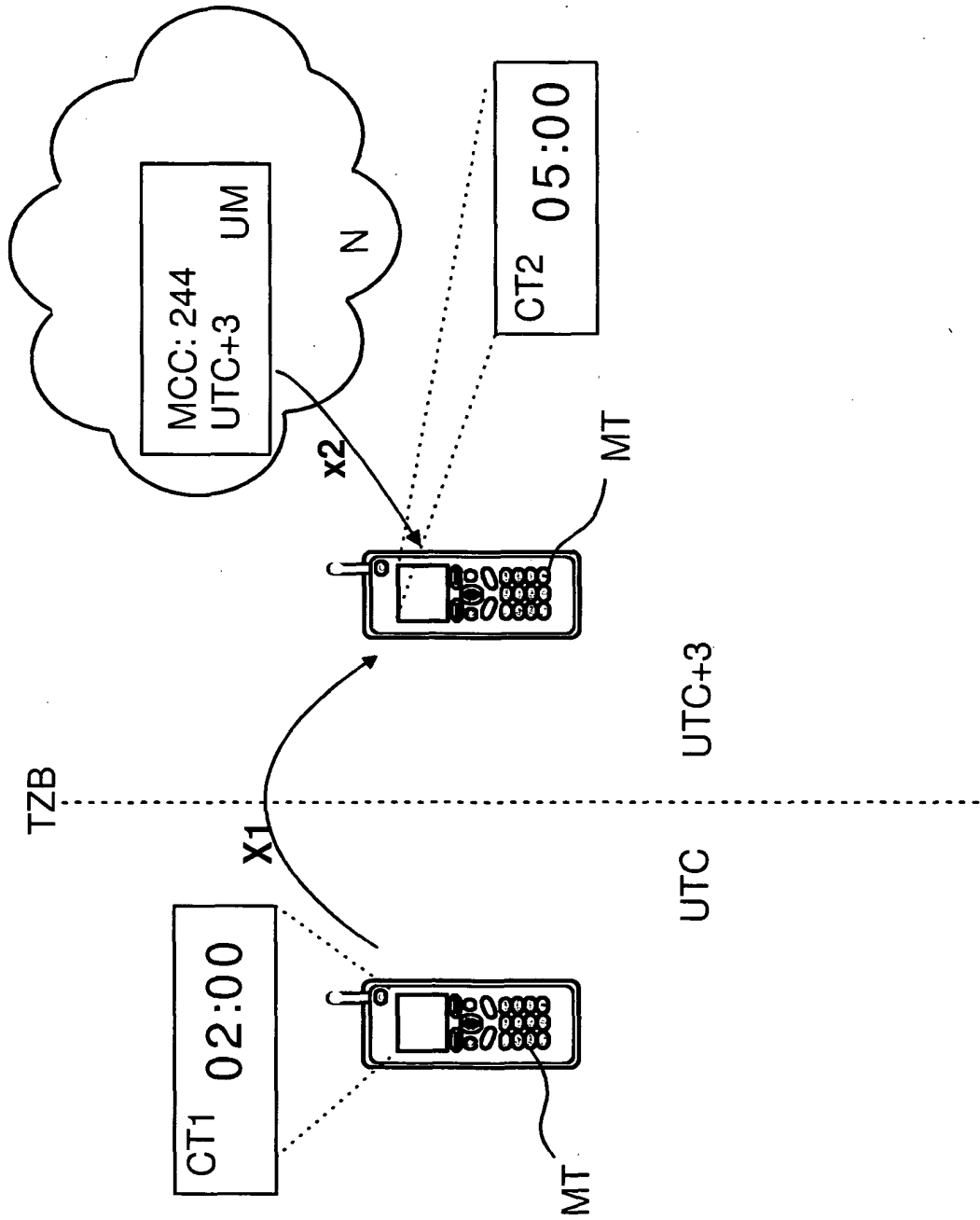


Fig. 2

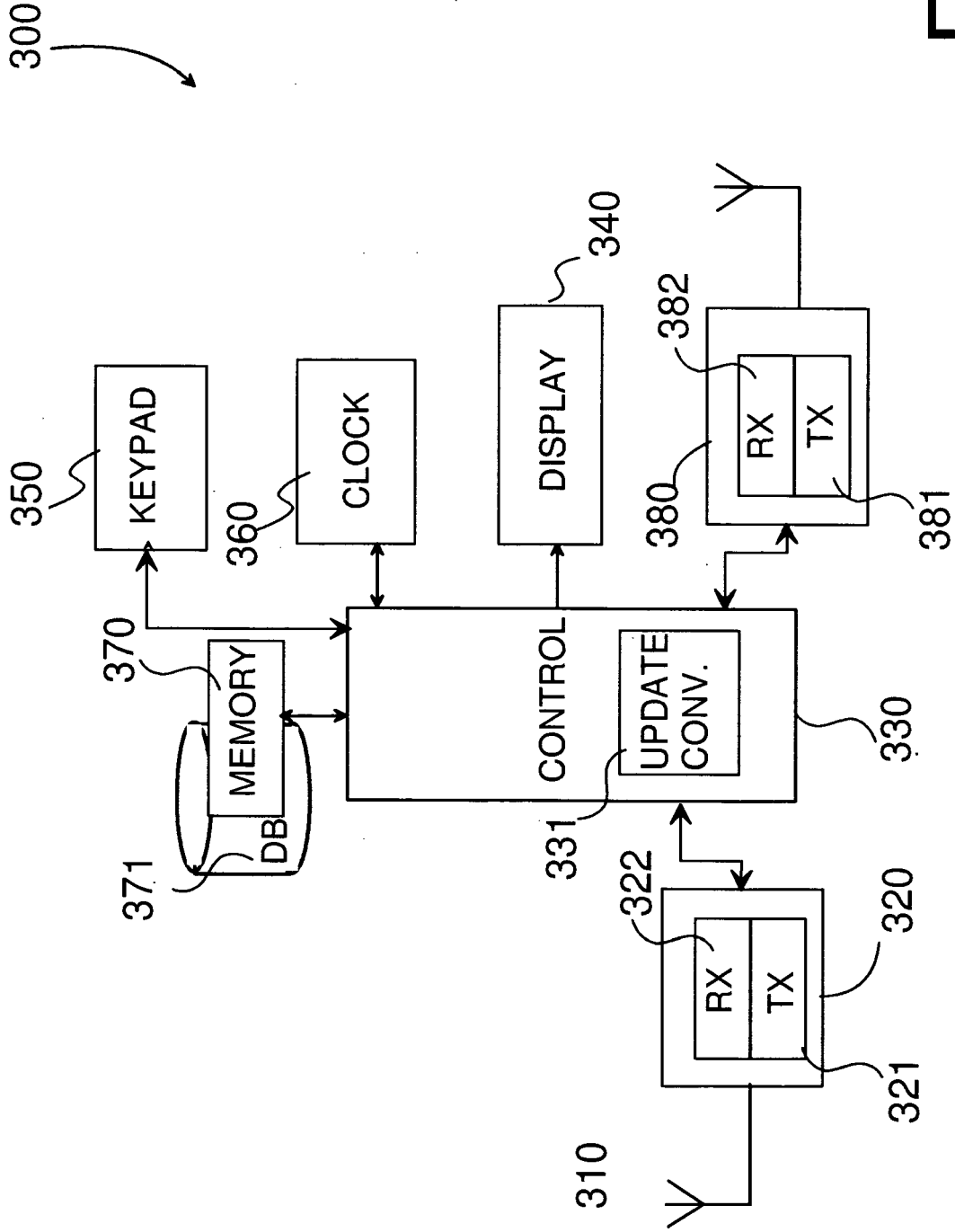


Fig. 3

REFERENCES CITED IN THE DESCRIPTION

This list of references cited by the applicant is for the reader's convenience only. It does not form part of the European patent document. Even though great care has been taken in compiling the references, errors or omissions cannot be excluded and the EPO disclaims all liability in this regard.

Patent documents cited in the description

- EP 1227644 A [0013]